



# Smart Go E-Business Application Platform

NTG Clarity offers Smart2Go, an enterprise software platform with a set of application services to rapidly deliver e-business applications. Smart2Go's standards-based J2EE and XML-metadata driven architecture supports multiple points of web and wireless interaction. The result is a flexible, scalable application that makes it faster, easier and more profitable for customers, partners, suppliers and employees to do business. Combined with professional services, NTG Clarity provides the industry expertise to deliver integrated e-business solutions.

In today's market, enterprises and service providers need to provide efficient access and automated processes to their employees, external partners and their customers. NTG Clarity provides Smart2Go, a software and technology platform to support quick time-to-market, direct access by internal and external users with on-line transactions.

## Business Values

**Direct Access for Customers:** With Smart2Go, enterprises are able to conduct high volume, secured transactions while enabling direct access for their customers - increasing customer loyalty and reducing the cost of customer retention.

**Empowerment of the Mobile Workforce:** With Smart2Go, an enterprise's internal operations can be automated with end-to-end integration - from the mobile worker's fingertips to the back-office systems.

**Business Partners:** With Smart2Go, enterprises can put partners in charge with an always-connected value chain, allowing massive amounts of business transactions to be conducted and letting the enterprises attain the critical mass needed to achieve sustainability and leadership in the market.

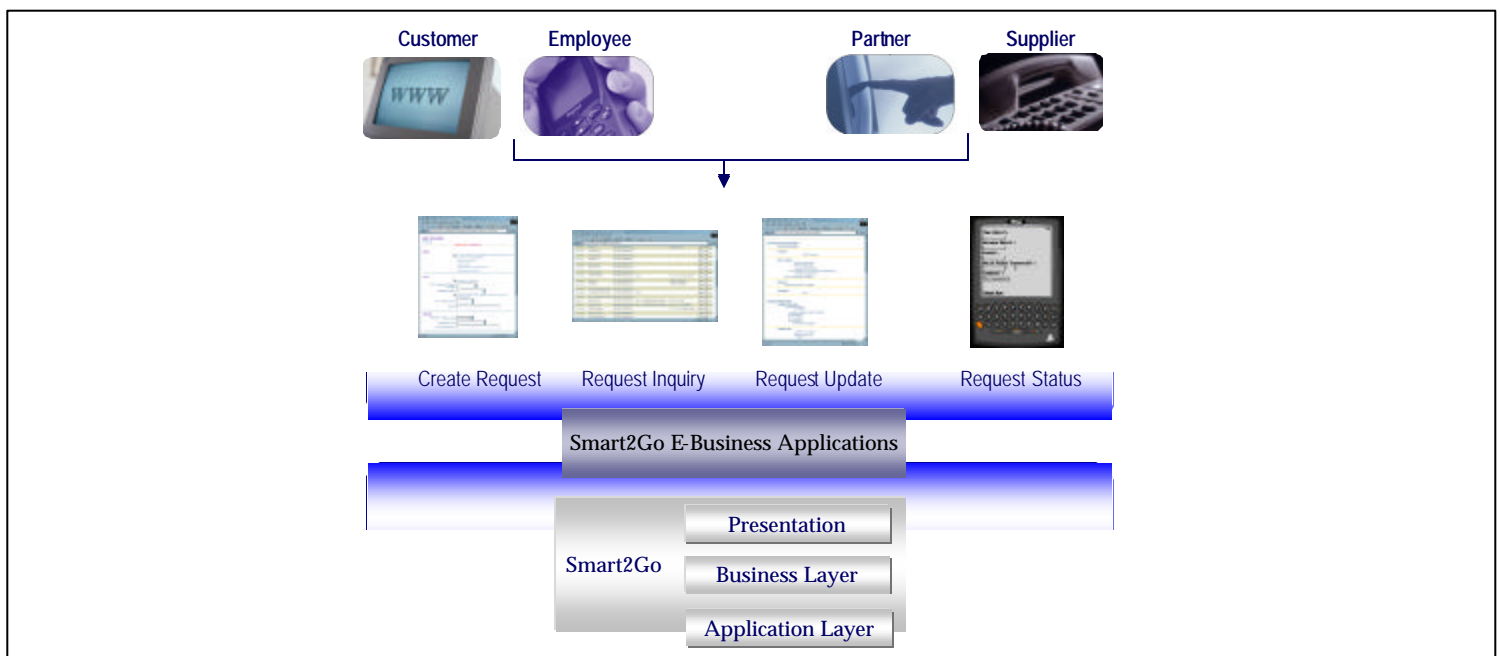
**Increase ROI:** Smart2Go leverages the value of back office systems. It rapidly delivers e-business applications that open new distribution channels and extend 24 / 7 self-service capabilities to the customers, partners and employees.

**Fast Time to Market:** Smart2Go's flexible and re-usable component architecture speeds time to market for new e-business applications. It can be integrated into the existing infrastructure, reducing risk and implementation costs.

## Applications

Smart2Go can support the rapid deployment of the applications shown below:

- ◆ **Customer Service and Self Service** – enable the Internet and mobile-based customer services and customer self-service, ranging from service inquiry, bill payment, and new service purchase.
- ◆ **Order Entry / Order Management** – enable service requests from the Internet and mobile devices to the integrated back-office systems while providing request status via the request fulfillment process.
- ◆ **Sales Force Automation** – provide the sales force and customer representatives the ability to sell products and services while integrating with various corporate applications such as CRM, accounting systems, and office productivity tools.
- ◆ **Field Work Force Automation** – allow field engineers or employees to use the Internet and mobile technologies to manage work orders and field service requests while enhancing customer service and operational efficiency.



## Features

Smart2Go provides the environment for creating Internet and wireless solutions that can enhance customer service. It can also improve operational efficiency by providing access to corporate information such as customer and sales data, provisioning and fulfillment systems and office productivity tools.

Smart2Go enables enterprise business users to take advantage of the Internet and wireless technologies to accelerate the delivery of products and services to the market place through:

- ◆ Rapid application development, adaptation and deployment
- ◆ Integration with back-office systems and network infrastructure
- ◆ Multi-channel access with personalization capability

Enterprises and service providers can use the components outlined below to develop applications of their needs.

**ServiceBuilder**

**TransformBuilder**

**WebPortal**

**Request Manager**

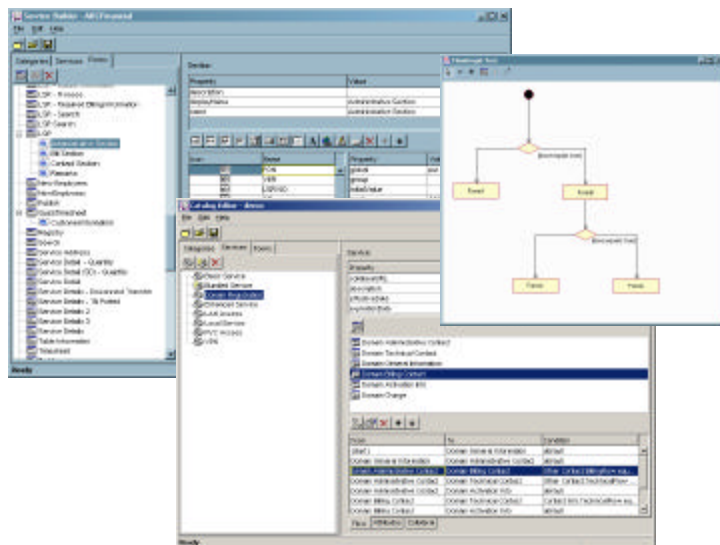
**Security**

**Session Manager**

## Technology

Smart2Go delivers a suite of presentation, business and application services built on Internet standards. It supports user presentation, business logic and transactional data. Its metadata-driven model uses XML to represent data, presentation and navigation.

With its APIs, Smart2Go provides easy an integration point to send and receive data to back office systems via messaging queues such as JMS or coordinate updates to databases with transaction services using JTA/JTS.



## Implementation Services

NTG Clarity provides software implementation and integration services with a track record in delivering successful solutions to service providers.

The services provided cover the full life cycle of solution implementation with key activities in:

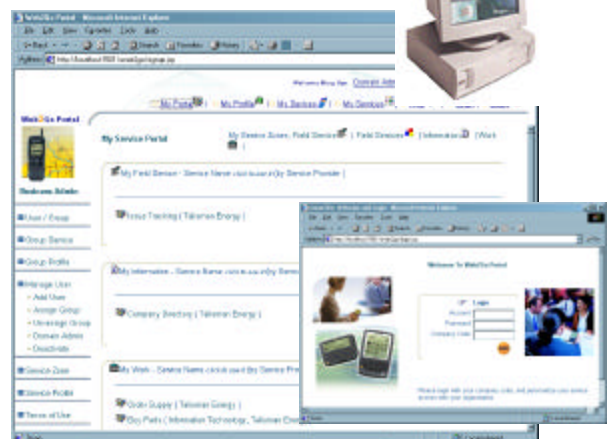
- ◆ Project Management
- ◆ Requirements Analysis
- ◆ Functional and Architecture Design
- ◆ Customization, Integration and Implementation
- ◆ Documentation and Training
- ◆ Installation, Configuration and Performance Optimization
- ◆ User Acceptance Testing
- ◆ Support and Maintenance

## Who is NTG Clarity?

- ◆ Full Service and Quality Networking Company
- ◆ #4 Fastest Growing Company in Alberta for 2001
- ◆ Publicly trading on the CDNX under symbol NCI
- ◆ Established in 1992
- ◆ Offices in Toronto, Montreal, Calgary, Vancouver, US and Egypt
- ◆ Experienced in developing and delivering enterprise and telecommunications solutions

## Why NTG Clarity?

- ◆ Client-centric, we are not satisfied until you are
- ◆ Specialized in networks and network applications
- ◆ Guarantee results and willing to share the risks
- ◆ We will evolve and maintain your environment while phasing out old technology/applications
- ◆ Flexible engagement model



**People. Products. Technologies.**  
**Network Software Solutions.**

**Contact Info:** sales@ntgclarity.com  
**Tel:** 1 800 838 7894 **www.ntgclarity.com**